

Higher Education Course Guide 2012/13



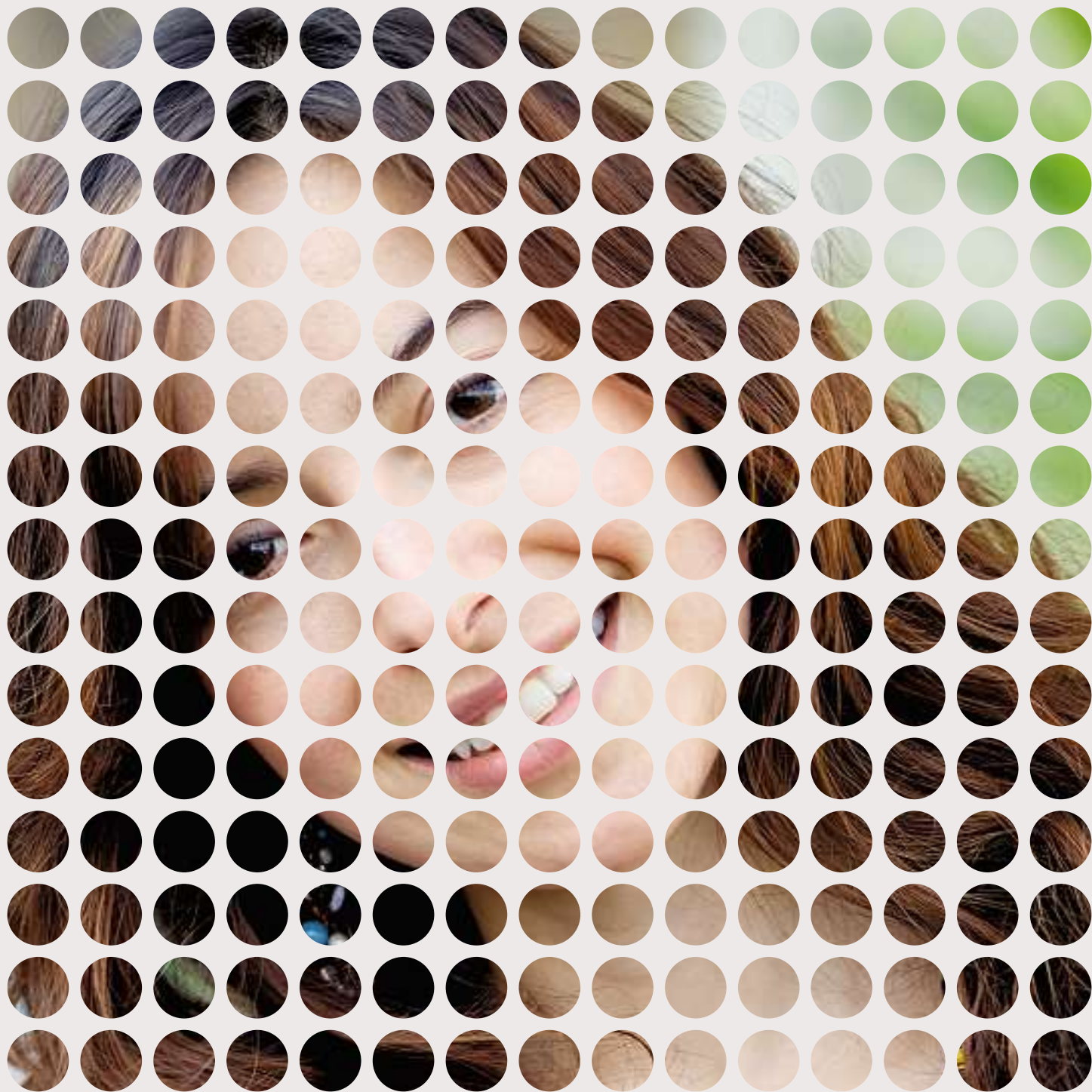
Anglia Ruskin
University

The College
of West Anglia



University Centre West Anglia

A joint venture between the College of West Anglia
and Anglia Ruskin University



Contents

Introduction

- Welcome **4**
- The higher education experience **5**
- Finance **6**
- How to apply **7**
- Disability Support **7**

Animal Behaviour and Veterinary Nursing

- Foundation Degree (FdSc) Applied Animal Behaviour **8**
- Foundation Degree (FdSc) Veterinary Nursing and Applied Animal Behaviour **9**

Business

- BA (Hons) Business Management **10**
- Diploma in Higher Education in Business Management (DipHE) **11**

Childcare

- BA (Hons) Early Childhood Studies **12**
- BA (Hons) Early Childhood Studies - 3rd year **12**
- Foundation Degree (FdA) Early Years, Playwork & Education **13**

Computing

- BSc (Hons) Computer Science **14**
- Foundation Degree (FdSc) Computer Science **15**

Construction and Civil Engineering

- HNC Diploma in Construction **16**
- Level 4 Diploma in Civil Engineering (HNC) **17**
- Level 5 Diploma in Civil Engineering (HND) **17**

Engineering

- BTEC Higher National Certificate (HNC) Electrical / Electronic Engineering or Mechanical Engineering **18**
- Foundation Degree (FdSc) Motorsport Engineering **19**

Equine Studies

- BSc (Hons) Equine Studies **20**
- Foundation Degree (FdSc) Equine Studies **21**

Humanities

- BA (Hons) History and English Literature **22**
- BA (Hons) Sociology and English Literature **23**
- BA (Hons) History and Sociology **24**

Psychology & Sociology

- BA (Hons) Psychosocial Studies **25**

Teacher Training & Education

- BA (Hons) Post-Compulsory Education & Training - Part-time **26**
- Diploma in Teaching in the Lifelong Learning Sector (DTLLS) **27**

Access/Pre-Degree

- Access to Higher Education **28**
- BTEC Foundation Diploma in Art and Design **29**
- Preparing to Teach in the Lifelong Learning Sector (PTLLS) **30**
- Certificate in Teaching in the Lifelong Learning Sector (CTLLS) **31**

Welcome



In this guide you will find a broad range of higher education courses available at the College of West Anglia through our partnership with Anglia Ruskin University.

The compact nature of the college ensures that our students receive unprecedented support from tutors and have the opportunity to form firm friendships with other learners, something that is not always

easy in a larger university. The college higher education environment is a warm learning community where everybody counts and success is attainable. You don't have to take my word for this: see what our students say throughout this course guide.

As well as the high levels of personal support, flexible study is a key feature of what we offer. Many courses offer a full or part-time option to enable you to plan your studies around jobs, families and other commitments. And if you do not feel ready to launch straight into higher level study, then we offer a one-year Access to Higher Education option to prepare you for the challenge ahead.

It is never too late to change career, gain additional qualifications or simply study a subject that you have always wanted to, but never had the chance. We look forward to helping you achieve your educational and career goals and feel sure you will enjoy your time with us.

David Pomfret
Principal
College of West Anglia



Anglia Ruskin University is pleased to work in partnership with the College of West Anglia to provide you with a choice of higher education programmes locally. A university education is an investment in your future and we are dedicated to discovering and helping you realise your potential.

Anglia Ruskin University currently provides education for over 28000 students at various campuses around the region and we are committed to developing courses to suit your needs.

By studying with us at the College of West Anglia you are joining a success story which will only improve as we work towards a University centre for West Norfolk and the Fenland area. We are working very closely with local, national and international businesses, resulting in, at the time of writing, 90% of our students being in work or further study six months after graduating.

I wish you well with your studies and look forward to welcoming you as a new student.

Professor Michael Thorne
Vice Chancellor
Anglia Ruskin University

The higher education experience

There is a range of practical, professional and personal support to help make your studies trouble free.

Why study an HE course at college?

Major differences between the way UK colleges and universities deliver higher education (HE) courses mean that college students are graduating with an average of around £17,500 less debt than their university counterparts, according to research released by the Association of Colleges (AoC, Nov 2010).

The AoC's findings highlight how a combination of greater opportunities to work part-time while studying, the ability to live at home and reduced travel costs are all key factors in minimising the overall debt levels of HE college students.

Advice and guidance

We have a dedicated higher education support team to help you throughout your time with us. This may include help with finance and general advice to support your studies. We also have a student advisor service for help and advice with issues that may be affecting your personal or academic life. To contact the HE support team please call 01553 815439.

Student Union

As an undergraduate student you will be affiliated to both the College of West Anglia (CWA) and Anglia Ruskin University (ARU) Student Unions. The Student Union is an integral part of the higher education experience and is run by students for students, offering a wide variety of services, facilities and social activities. An additional benefit of being a member of the Student Union is the NUS Extra card, which gives you discounts at many high street stores.

Childcare

The children's centre at the King's Lynn campus has the distinction of being amongst the top 2% of nurseries in the country (as rated by Ofsted). With experienced, fully-trained staff

and excellent facilities, the nursery can cater to more than 50 children aged from 2 months to 5 years and is available during term time to all students. Costs vary and are dependent on the child's age, care period and eating arrangements. For further information, please contact the childcare manager on 01553 777382.

Please be advised that nursery spaces can get filled very quickly.

Accommodation

Student services can provide details on a range of accommodation options for students studying at all campuses, including private rented housing and home stay. The type of accommodation available varies at each campus. More details can be found on the college website (www.cwa.ac.uk) or by contacting the student services department, telephone 01553 761144.

Tuition fees

From September 2012 Anglia Ruskin's proposed tuition fees for courses run by the College of West Anglia are as follows:

- **Full-time foundation degree or HND/HNC** - £7,500 per year
- **Full-time course leading to a degree** - £8,300 per year

Fees will be confirmed in August 2011 and published on the ARU website.

For up-to-date part-time and overseas student fees please visit www.anglia.ac.uk.

You can pay the fees in advance or in instalments; a repayable loan can be taken out for both full-time and part-time courses.

Finance

Finance

To obtain the most recent information on funding arrangements, you should visit <http://www.direct.gov.uk/studentfinance>

You will need to contact Student Finance England at the above website as soon as you know that you are planning to enrol on a full-time undergraduate course even if you are unsure of the institution where you wish to study at that stage.

Financial support from the university

Anglia Ruskin have introduced a £3.4million package of scholarships and bursaries to help with tuition fees and living costs for students from lower income groups. For more information please visit www.anglia.ac.uk.

Financial support from the government

Full-time students

If you are a full-time student you can apply for:

A Tuition Loan to cover tuition charges, which is paid directly to the university each year of study, once you've registered on your course.

A Living Cost Loan or Maintenance Loan, available to help with living costs each year of your course. This is paid into your bank account at the start of each term, once you've registered on your course.

Living Cost Grants to help you with your living costs each year. You don't have to pay grants back. The Living Cost Grant is paid into your bank account at the beginning of each term once you've registered on your course.

Scholarships, bursaries and awards

As part of the new student finance system, Anglia Ruskin University will offer students from lower income families (under £25,000 per year) a new National Scholarship Programme. This new scheme is targeted towards students who most need financial help. Full-time students who do not receive an Anglia National Scholarship will continue to be offered some financial support based on level of household income. For more information please visit www.anglia.ac.uk.

Childcare Grant and Parents' Learning Allowance

If you're a full-time student with children, you may be able to get extra help through the Childcare Grant, Parents' Learning Allowance or tax credits. Full-time students with adult dependants may be entitled to extra help from the Adult Dependants' Grant.

Part-time students

If you are a part-time student you can apply for:

A Tuition Loan. From September 2012 new part-time students can apply for a tuition loan, subject to the approval of Parliament.

For more information and to apply for loans and grants please visit
www.direct.gov.uk/studentfinance

Repayments of student loans

When repayments start

Full-time students begin repaying student loans in the April after finishing their course, if they earn over £21,000. Part-time students studying for more than three years start repayments in the April after they've finished three years of study, if they earn over £21,000.

What you'll pay back

Once you earn over £21,000 you pay nine per cent of your income above £21,000. Repayments are normally taken automatically from your salary with tax and National Insurance.

Loan interest rates

Interest is charged on your loan while you're studying. Until you start repaying the loan, interest is charged at the rate of inflation plus three percent.

Council tax exemption

Full-time students, if living alone, are exempt from paying council tax. If you live in a household with another non-student aged over 18, then the household qualifies for a 25% discount on the council tax bill.

How to apply

Please be aware of the different application procedures for full and part-time study as stated below.

1. Full-time study

For any full-time BSc, BA, HND or foundation degree course, both home and international students must apply through the University and College Admissions Service (UCAS) using the following method:

UCAS 'apply' web based application system

For further details on the application process please contact UCAS on 0871 4680468 or view their extensive web page at www.ucas.com. Information, application advice and course details are also available from schools, colleges and advisors.

The normal closing date for receiving applications is the 2nd week in January.

If you miss the deadline, UCAS will still accept applications after this date and the college receives many applications throughout the remainder of the application year, sometimes as late as one week before the course begins, or through 'Clearing'. The UCAS tariff is designed to allow higher education institutions the opportunity to make offers in the form of points depending on the examinations that applicants are due to sit. An example of a typical offer that

you may receive could be 240 points – which is equivalent to 3 C's or B, C and D at A level. After we have considered your application we will write to you and notify UCAS of our decision. In some cases you may be invited to attend an interview before we decide whether to offer you a place. Most mature students are interviewed and for certain courses an interview is necessary.

If we offer you a place, it may be:

- Unconditional – you have satisfied all the immediate requirements for admission and have been accepted.
- Conditional – you must meet certain conditions – normally obtaining certain qualifications or certain grades in examinations.

UCAS will send you an offer letter, which clearly states the conditions you must meet.

Institution code – The college's UCAS code is **W35**, the short institution name is **WESTA**.

2. Part-time study, Access/Pre-degree

If you wish to study a degree, foundation degree or HNC programme on a part-time basis or an Access/Pre-degree course you will need to apply direct to the college.

Please visit www.cwa.ac.uk/apply.

www.cwa.ac.uk T: 01553 761144

Disability support

If you require this guide in a different format please contact our student services department on 01553 761144.

The college caters for a wide range of disabilities and learning difficulties and we welcome applications from students with disabilities or other additional needs. All applications from such students are considered fairly and against the same academic criteria as other applicants. If you consider your needs to be significant and will require substantial additional support please contact our additional support co-ordinator on **01553 815483** at your earliest convenience.

You may also have an individual support plan. This details the recommended support for your difficulties and/or disability, but can also include special arrangements for medication and examinations. If you pass a copy to the college we will look to respond.

Will I get any help with funding?

Both full-time and part-time higher education students with disabilities may be eligible for extra financial support. This includes Disabled Students' Allowances (DSA), Access to Learning Fund, Disability Living Allowance and Employment and Support Allowance. For more information please visit www.direct.gov.uk/studentfinance.

Animal Behaviour and Veterinary Nursing

Foundation Degree (FdSc) Applied Animal Behaviour
D390 - FdSc/AAB

Course description

In this two year programme students will benefit from the practical training and work experience that form an important part of all foundation degrees, alongside a thorough training in scientific theory and principles, with a particular emphasis on the study of animal behaviour and welfare. Module delivery will be complemented by educational visits to appropriate animal care and housing facilities such as zoological gardens and wildlife parks, veterinary hospitals and animal rehabilitation centres.

Applicants must have a genuine interest in animal behaviour, health and welfare. They must be keen to learn how to understand and interpret the behaviour of a wide range of domestic and captive animals as well as provide education and support for animal handlers and/or owners. They should be good communicators and enjoy teamwork.

Course length: 2 years full-time or 4 years part-time

Location: Cambridge campus (Milton)

Entry requirements:

- Interview required
- All applicants must have a minimum of five GCSEs at grade C or above (to include English language, maths and one science subject; equivalent level two qualifications in mathematics and English are also acceptable)
- A minimum of 120 UCAS tariff points to ideally include at least one A level in a biological science, a BTEC or C&G qualification in a science subject, an appropriate advanced GNVQ or equivalent qualifications (considered on their own merit)
- Students who have the appropriate GCSEs but may not have 120 UCAS points may be eligible for entry. This will be assessed at interview, using portfolio evidence and employer references

We plan to offer the BSc (Hons) in Veterinary Nursing and Applied Animal Behaviour for 2012/13 but are awaiting validation for this course. Please visit www.cwa.ac.uk for further details.

Foundation Degree (FdSc) Veterinary Nursing and Applied Animal Behaviour
D990 -FdSc/VNAAB

Course length: 3 years full time or 6 years part-time

Location: Cambridge campus (Milton)

Entry requirements:

- Interview required
- All applicants must have a minimum of five GCSEs at grade C or above (to include English language, maths and one science subject; equivalent level two qualifications in mathematics and English are also acceptable)
- A minimum of 120 UCAS tariff points to include at least one A level in a biological science, a BTEC or C&G qualification in a science subject, an appropriate advanced GNVQ or equivalent qualifications (considered on their own merit)
- Students who have the appropriate GCSEs but may not have 120 UCAS points may be eligible for entry. Typically this would include those who are in possession of recognised RCVS qualifications. This will be assessed at interview, using portfolio evidence and employer references
- Students should also be aware that the RCVS requires newly qualified nurses to disclose information relating to any conviction, including drugs offences to be disclosed when registering. Therefore students with these convictions may not be accepted onto the course

Animal Behaviour and Veterinary Nursing

Course description

This programme combines the practical training and work experience required to become an RCVS registered veterinary nurse, alongside a broader programme of study for foundation degree. Students will receive thorough training in scientific theory and principles with a particular emphasis on the study of animal behaviour, welfare and animal nursing. In addition, students will be required to develop extensive work-based skills during an extended period of placement within RCVS approved veterinary training practices.

Applicants must have a genuine interest in animal health and welfare. They must be keen to learn how to provide expert nursing care for domestic animals as well as education and support for their owners. They should have a clear understanding of the range of practical work required in a veterinary surgery (preferably via work experience), be a good communicator and enjoy teamwork.

This course is offered subject to validation.



Business

BA (Hons) Business Management N200 - BA/BusMgt

Course description

The aim of this course is to equip you with a solid foundation in business and management theory. You will also have the opportunity to develop a range of practical skills and analytical techniques currently used within a number of business areas.

The wide range of course options enable you to focus on areas of particular interest, or to prepare for specific professional requirements. Close ties with international industry and business ensure that course content is aligned with contemporary business practice.

This course is about preparing you for the world of business, which means not just giving you the skills that are in use today, but developing you intellectually so that you can continue to learn and grow after you graduate, and keep up with the fast-changing commercial environment.

Course length: 3 years full-time or 6 years part-time

Location: King's Lynn campus

Entry requirements:

- Interview required
- At least two relevant A levels at grade D or above (i.e. 120 points or National Certificate/Diploma in Business double merit or above or Access qualification at merit level)
- Mature students without the above are considered depending on relevant experience and aptitude



Lesley Wilson, BA (Hons) Business Management

"I worked full-time in an administration role for 20 years but was recently made redundant. I tried to look at this positively as it gave me the opportunity to study for a degree, an ambition I've had for a long time but not been in the position to do."

"I'm really enjoying the course so far, our tutors are very approachable and extremely knowledgeable and as the class is quite mixed in terms of ages and previous experience we have found that we can all learn from each other."

"The fact that I can study for a degree on my doorstep means that going back to college is a realistic option for me. I would never have been able to manage it with my family if I had had to travel."

“ The fact that I can study for a degree on my doorstep means that going back to college is a realistic option for me. ”

Course length: 2 years full-time or 4 years part-time

Location: King's Lynn campus

Entry requirements:

- For the full-time course applicants will need at least two relevant A levels at grade E or above (i.e. 80 points or National Award in Business, minimum grade double E) or a pass at Access level
- For part-time entry students will be expected to hold the above or a relevant HNC level or equivalent
- Mature students without these qualifications will be considered based on relevant experience and aptitude

Course description

The aim of this course is to equip you with a solid foundation in business and management theory. You will also have the opportunity to develop a range of practical skills and analytical techniques currently used within a number of business areas.

The wide range of course options enable you to focus on areas of particular interest, or to prepare for specific professional requirements. Close ties with international industry and business ensure that course content is aligned with contemporary business practice.

This course is about preparing you for the world of business, which means not just giving you the skills that are in use today, but developing you intellectually so that you can continue to learn and grow after you graduate, and keep up with the fast-changing commercial environment.



Childcare

BA (Hons) Early Childhood Studies X310 - BA/ECS

Course description

Our degree will provide you with the knowledge and skills to enable you to take up a range of roles within an early-years environment, and act as a positive influence in the lives of young children. Created in response to developments in research and government policy, our course draws on a number of disciplines to produce graduates who can facilitate and support the well-being of young children.

This degree is run over a three year period, with a wide range of modules studied.



BA (Hons) Early Childhood Studies – 3rd year

Course description

This course is designed for those students who have successfully gained a Foundation Degree (FdA) in Early Years, Playwork & Education and who wish to achieve the full BA (Hons) in Early Childhood Studies.

This degree will enable you to take up a range of roles within an early-years environment and act as a positive influence in the lives of young children. Created in response to developments in research and government policy, this course draws on a number of disciplines to produce graduates who can facilitate and support the well-being of young children.

Course length: 3 years, full-time

Location: King's Lynn campus

Entry requirements:

- Interview required
- Applicants must be aged 18 or over
- A levels in suitable subjects equivalent to 200 UCAS points (please note AS level points are not counted towards the tariff required for this programme)
- Five GCSEs at grade C or above including English, mathematics and science
- Our published entry requirements are a guide only and our decision will be based on your overall suitability for the course as well as whether you meet the minimum entry requirements

Course length: 1 year full-time or 2 years part-time

Location: King's Lynn campus

Entry requirements:

- Interview required
- Successful completion of the Foundation Degree (FdA) Early Years, Playwork & Education
- CRB check
- Note: if you wish to progress to qualified teacher status or early years professional status please check the current entry requirements for English, maths and science

Foundation Degree (FdA) Early Years, Playwork & Education LX5H - Fda/EYCEd

Childcare

Course length: 2 years full-time or up to 4 years part-time

Location: King's Lynn campus

Entry requirements:

- Interview required
- Applicants must be aged 18 or over
- Applicants should have a minimum of two years' proven relevant work experience and be able to arrange to spend two days a week in an early years setting, if not already doing so
- Applicants must have relevant level 3 qualifications
- Level 2 English qualification (GCSE, GCE grade C or above, CSE grade 1 or level 2 adult literacy)
- Please note: if you wish to progress to Qualified Teacher Status or Early Years Professional Status, please ensure that you check the current requirements for English, maths and science qualifications
- CRB check

Course description

This course is designed for people with suitable level 3 qualifications, preferably in childcare, who have experience working in an early-years environment. The degree will appeal to you if you have an interest in young children's learning and development. You will explore young children's physical, social, emotional, language and cognitive development and current policies and practices, using examples drawn from the UK and elsewhere.

The focus is on gaining the vocational skills required to succeed within an early-years, playwork and educational setting and on giving you the skills required to continue to develop in order to meet the demands of an ever-changing environment.

The foundation degree is run over a two year period, with a wide range of modules to study. A work placement of 700 hours will be an essential part of the programme.



Paula Reed, Foundation Degree (FdA) Early Years, Childcare & Education

Paula completed the Foundation Degree Early Years, Childcare and Education (now called Foundation Degree (FdA) Early Years, Playwork & Education) and is currently topping it up to a full BA (Hons) while working at St. Michael's Family Centre, King's Lynn. She applied to the college to complete a higher education level course as she wanted to extend her learning and knowledge. The location was also convenient to both home and work.

"The thing I enjoy most about coming to college is the opportunity to meet new people and extend my knowledge. As a mature student it really boosted my confidence both personally and professionally. The things I have learnt and the skills

I have developed at college have supported me at work and enabled me to support my colleagues" said Paula.

Paula would say to anyone thinking about studying a higher education course at CWA **"Do it! It provides you with a valuable learning experience, which will last a lifetime. You should not underestimate the dedication and commitment needed to undertake a HE course but the sense of pride and achievement when you succeed makes it all worthwhile."**

“ Do it! It provides you with a valuable learning experience, which will last a lifetime. ”

Computing

BSc (Hons) Computer Science
G401 - BSc/CS

Course description

This course is for anyone wishing to work in computing, networking information technology or business information systems, or anyone wishing to progress to a PGCE and work either as a teacher or lecturer.

Like all higher level computing courses at the college the BSc (Hons) is module based and covers the basic areas of computing and information technology. Modules are primarily practical based wherever possible, using a wide range of relevant software on a variety of computer platforms.

Course length: 3 years full-time or 6 years part-time

Location: King's Lynn campus

Entry requirements:

- Interview required
- A levels in suitable subjects equivalent to 200 UCAS points or National Diploma/Award equivalent to 200 UCAS points (merit, merit, merit) or
- Successful completion of an Access to computing course as an alternative to A levels
- Applicants with suitable experience will also be considered
- All students must have GCSE mathematics at grade C or above or equivalent



Mathew Frost, BSc (Hons) Computer Science

"I've always been interested in technology and how things worked so I studied a BTEC National Diploma for IT Practitioners course at the college straight from school. By the end of my BTEC course I knew I wanted to take my studying further at CWA; I had made a great group of friends and found the lecturers very knowledgeable and always willing to help. I stayed at CWA to complete the BSc (Hons) Computer Science.

The course is structured well, with a great mix of interesting and challenging modules. The fact that my class was relatively small compared to the class sizes of a university meant that the lecturers really did have time for you if you were struggling and would get involved in personal projects and would offer their opinions and advice.

The BSc (Hons) Computer Science is a great way to step into the world of computing. I have since taken on full-time employment at CWA in the statistical investigation department where I utilise the skills that I acquired in my degree on a day-to-day basis."

“ By the end of my BTEC course I knew I wanted to take my studying further at CWA; I had made a great group of friends.”

Course length: 2 years full-time or 4 years part-time

Location: King's Lynn campus

Entry requirements:

- Interview required
- A levels in suitable subjects equivalent to 160 UCAS points or National Diploma/Award equivalent to 160 UCAS points (merit, merit, pass) or
- Successful completion of an Access to computing course as an alternative to A levels
- Applicants with suitable experience will also be considered
- All students must have GCSE mathematics at grade C or above or equivalent

The course offers the following modules:

Year 1

- Fundamentals of design – software design methodologies
- Introduction to programming – using C#
- Computer systems – how computers work, the CPU, computer logic
- Understanding the work sector
- Work based learning – industrial placement based learning

Course description

This course is for anyone wishing to work in computing, networking information technology or business information systems, who do not necessarily have the academic qualifications for the full BSc (Hons) course. As with all foundation degrees there is a strong element of work based learning.

Like all higher level computing courses at the college, the FdSc is module based and covers the basic areas of computing and information technology. Modules are primarily practical based wherever possible, using a wide range of relevant software on a variety of computer platforms.

Year 2

- Object oriented programming – further programming using C++
- Database design and implementation – Using MySQL
- Computer network principles - follows the CISCO CCNA semesters 1 and 2 syllabus
- Interaction and usability
- Systems modelling and software design patterns
- Work based learning – industrial placement based learning

Construction and Civil Engineering

HNC Diploma in Construction

Course description

This course is for those who wish to develop a professional approach to construction – both on and off-site. Students who have been on the course previously have come from employment areas such as design, site management, quantity surveying, surveying and craft areas.

The construction department has over 30 years of experience in delivering HE programmes and has always given a high profile to this part of its provision. The course offers a flexible, modular driven programme, which provides students with high quality learning experiences. Our programme directly services the needs of local and national contractors, thus enabling the department to maintain its links with the roots of the industry.

Course length: 2 years part-time and will involve day release comprising of 34 weeks per year

Location: King's Lynn campus

Entry requirements:

- Interview required
- Applicants must possess one (or more) of the following:
 - A GNVQ Advanced Built Environment
 - BTEC National in Construction
 - Craft qualification plus work experience/bridging units
 - Work experience in a construction area
- Mature applicants considered



Construction and Civil Engineering

Level 4 Diploma in Civil Engineering (HNC)

Level 5 Diploma in Civil Engineering (HND)

Course length:

HNC - 2 years consisting of day release

HND - 2 years consisting of block release (15 weeks per year). There will be 2 blocks of study each year, one of 7 weeks the other of 8

Location: King's Lynn campus

Entry requirements:

- Interview required
- BTEC National Certificate in Civil Engineering or in Construction (with further mathematics and structural mechanics units)
- GNVQ (Advanced) Built Environment
- Any other qualification deemed to be the equivalent of the above
- Mature candidates will be considered

Course description

This course is suitable for all those with a keen interest in progressing towards a civil engineering qualification.

Intellectual, technical and managerial skills are developed throughout this course, making civil engineers highly sought after in many fields – not just in the civil engineering industry. Covering a wide range of subjects, throughout this course emphasis is placed on a problem-solving approach and the appropriateness of teamwork in the construction industry. Use is made of information technology and computer systems.



Will Smart, Level 5 Diploma in Civil Engineering (HND)

Will applied to complete a higher education level course at CWA as “it was the only way to study an HND in block release format. I have also previously studied at the college, so knew the tutors were good.”

“The thing I enjoy most about coming to college is the challenge of work, but it is also a nice change of scenery.”

Once Will has finished this course he plans to work as a civil engineer and possibly go on to study a degree level course.

Will would say to anyone thinking about studying higher education at the College of West Anglia “I couldn't comment on other courses, but for civil engineering I would definitely recommend going on this course.”

“ I would definitely recommend going on this course. ”

Engineering

BTEC Higher National Certificate (HNC) in Electrical / Electronic Engineering or Mechanical Engineering

[The college is proposing to run the BTEC Higher National Diploma (HND) in Electrical / Electronic Engineering from September 2012. Please see www.cwa.ac.uk for latest information]

Course description

The HNC day release course is designed to cater for experienced technicians who are in full-time employment and wish to progress to technician engineer status.

This course is designed to help students who wish to enter the industry as technician engineers with design, managerial or development responsibilities. The HNC is a 2 year, level 4, part-time course. Academic standards are high, and the commitment of staff and students ensures highly motivated and competent graduates, well equipped to succeed in the engineering industry.

BTEC courses are practically based. The College of West Anglia's technology department facilities include: PLC, PIC, robotics, hydraulic, pneumatic, tensile testing, 60W laser cutter, 3D printer, XYZ CNC lathe, HASS CNC milling machine and strain gauge equipment plus Solidworks, Autocad, Multisim, GX developer and PCB software.

Course length: 2 years day release comprising 34 – 36 weeks per year (part-time)

Location: King's Lynn campus

Entry requirements:

- Interview required
- National Certificate in Engineering (minimum of grade of merit)
- National Diploma or A levels in maths or science

This course is open to applicants of all ages provided they meet the entry requirements, or can prove that they have a similar level of interest/experience in the engineering field. Applications with equivalent qualifications or relevant experience will be considered and their suitability assessed during interview.

Other entry requirements and/or experience will be considered during a college interview.



Glen Roberts, BTEC Higher National Certificate (HNC) in Electrical / Electronic Engineering.

Glen is in the Royal Air Force, who have supported him financially to be able to do the course. Glen said: "I am a fully qualified mechanical engineer in the RAF but as I am coming out soon and on the resettlement programme I wanted to retrain as an electrical engineer."

"The course is good; it includes practical and theory which allows you to put into practice what we're being taught. I have also noticed that the practical work certainly builds up your confidence in the subject. The group is very mixed in terms of experience and age which has worked to our advantage; it means we can all learn from each other as well."

“ The group is very mixed in terms of experience and age which has worked to our advantage; it means we can all learn from each other as well. ”

Foundation Degree (FdSc) in Motorsport Engineering H330 - FdSc/MotE

Engineering

Course length: 2 years full-time or 4 years part-time

Location: Isle campus

Entry requirements:

- Interview required
- National Diploma in Motorsport or Engineering, or
- National Certificate in Motorsport or Engineering, or
- Two A levels in maths and science
- Applicants with industrial experience may also be considered

Course description

The foundation degree is designed for individuals working in the motorsport industry or those wishing to move into this area. In either case you will need to be actively involved in motorsport in some capacity.

You will cover a broad range of topics including: engineering science, aerodynamics, computer applications in motorsport, vehicle systems, materials and manufacturing, competition car preparation, engine technology and organising competition events.

These will be delivered through a largely hands-on approach; for example you will be expected to attend race events and support competing race cars. In the workshop you will be able to practise and show your skills in the preparation of race cars for competition events. This, with the race events, will enable you to gain experience of industry practices and standards.



Equine Studies

BSc (Hons) Equine Studies
D42F - BSc/ES

Course description

This three year programme has been devised for joint delivery between Anglia Ruskin University and the College of West Anglia. It has been designed to meet the academic and practical needs of a broad range of individuals seeking career pathways within the growing equine industry.

The course will impart a fundamental understanding of horse anatomy, physiology, health and traditional training methods. Students will also be given the opportunity to explore both the science and practical application of the latest techniques in the equine world such as: reproduction through artificial insemination, training techniques and equine rehabilitation, including equine hydrotherapy.

Class tuition will be complemented by a range of visits to equine establishments.

Work-based learning is a fundamental aspect of the degree and a percentage of this will be gained through practical work within the College of West Anglia's equine facilities. In addition, a minimum period of a six weeks work placement in a suitable equestrian business during the summer of the first year is a requirement of the course. Students are expected to take responsibility for arranging interviews with suitable local businesses for their work-based placement.

Course length: 3 years full-time or 6 years part-time

Location: Cambridge campus (Milton)

Entry requirements:

- Interview required
- All applicants must have a minimum of five GCSEs at grade C or above (to include English language, mathematics and one science subject)
- A minimum of 220 UCAS (BSc) tariff points to include at least one A level in a biological science, a BTEC or C&G qualification in a science subject, an appropriate advanced GNVQ or equivalent qualifications (considered on their own merit)
- Students who have the appropriate GCSEs but may not have 220 UCAS points may be eligible for entry. This will be assessed at interview, using portfolio evidence and employer references
- Evidence of practical experience in an equine business prior to commencing the course is required



www.cwa.ac.uk T: 01553 761144

Course length: 2 years full time or 4 years part-time

Location: Cambridge campus (Milton)

Entry requirements:

- Interview required
- All applicants must have a minimum of five GCSEs at grade C or above (to include English language and two science subjects)
- A minimum of 120 UCAS tariff points to include at least one A level in a biological science, a BTEC or C&G qualification in a science subject, an appropriate Advanced GNVQ or equivalent qualifications (considered on their own merit)
- Students who have the appropriate GCSEs but may not have 120 UCAS points may be eligible for entry. This will be assessed at interview, using portfolio evidence and employer references. Evidence of practical experience in an equine business prior to commencing the course is required

Course description

This two year programme has been devised for joint delivery between Anglia Ruskin University and the College of West Anglia. It has been designed to meet the academic and practical needs of a broad range of individuals seeking career pathways within the growing equine industry.

The course will impart a fundamental understanding of horse anatomy, physiology, health and traditional training methods. Students will also be given the opportunity to explore both the science and practical application of the latest techniques in the equine world such as: reproduction through artificial insemination; training techniques and equine rehabilitation, including equine hydrotherapy.

Class tuition will be complemented by a range of visits to equine events and establishments.

Work-based learning is a fundamental aspect of the degree and a percentage of this will be gained through practical work within the College of West Anglia's equine facilities. In addition, a minimum period of six weeks work placement in a suitable equestrian business during the summer of the first year is a requirement of the course. Students are expected to take responsibility for arranging interviews with suitable local businesses for their work-based placement.



Stefanie Spielhaupter, Foundation Degree (FdSc) Equine Studies

Stefanie applied to the college to complete the foundation degree in equine studies as they did not offer a suitable course in Germany. "When I found this course I knew it would be a good opportunity to gain practical and theoretical knowledge" said Stefanie.

The thing she most enjoys about coming to college is "the fact I could choose which course I want to study according to my interests."

Once Stefanie finishes the course she plans to get a job within the equine industry either in Germany or the UK specialising in breeding, training or therapy.

"I would say to anyone thinking about coming to CWA to study a higher education level course that it is a great experience. It gives you a chance to study a subject you are interested in and will hopefully help you to find work in the same area."

“ I knew it would be a good opportunity to gain practical and theoretical knowledge.”

Humanities

BA (Hons) History and English Literature QV31 - BA/EH

Course description

Studying history and English gives you the opportunity to examine historical events and literacy texts side by side. Applicants need not have studied these subjects recently or even at all to be accepted on to the course.

This fascinating degree encourages you to engage with new ideas and new ways of reading, as you develop your abilities to think critically, communicate effectively and articulate your ideas clearly and succinctly.

In year 1 examples of modules on offer at present include 'Introduction to English Literature' and 'Introduction to Western Civilisation' (History); in other words, these are general modules to give students background material for more specialised study in years 2 and 3. Examples for year 2 and 3 in English at present are 'Shakespeare and his Contemporaries' and 'Women's Writing,'

and for History 'History Today' and 'the United States in the Twentieth Century.'

There are up to 12 hours of classes a week spread across part of 2 to 3 days per week. Depending on module combinations, this may occasionally stretch to part of 4 days.

Course length: 3 years full-time or up to 6 years part-time

Location: King's Lynn campus

Entry requirements:

- Interview sometimes required
- Two D's at A level or a pass for the Access to Higher Education Diploma with some units at merit or above

Ilona Smith, BA (Hons) History and English Literature



Ilona is currently studying the BA (Hons) History and English Literature and says

"the two subjects complement each other brilliantly and topics from each subject will often cross over. History is similar to being a detective, gathering historical evidence has opened my eyes to differing interpretations. Studying English literature has made me think of critical perspectives and ideas that I had never considered before starting my degree."

"Now that my children are of school age I felt that I had the time to further my education and pursue a career path that has interested me for a long time. Initially being a student again was a daunting idea so I decided to complete an Access course to get me into the swing of learning again" said Ilona.

"Being a mum meant that I was restricted by travelling long distances so it was a relief to discover that I could study a degree course locally.

Being a mature student is a bonus as I feel that life experience has enabled me to contribute and apply different perspectives to assignments and seminar discussions. I have been out of education for a substantial amount of time but the support and guidance from the teaching staff has given me a huge amount of confidence to accomplish my ambition."

The thing Ilona most enjoys about coming to college is "learning and discovering new concepts and ways of thinking. Being at college has given me a different perspective on life and above all confidence." Once she has completed her degree Ilona is contemplating teaching but would like to extend her education further by possibly studying for an MA.

"I found the college was extremely child friendly in that lectures would often start after the morning school run and end before school finished. The confidence that studying a degree course gives you is priceless so therefore I would say hurry up and enrol! You will have an amazing experience; discover new things about yourself you never knew, gain skills and a huge amount of pride. You will meet some amazing people and make great lifelong friends. It is a wonderful opportunity!"

Course description

The fields of sociology and English form a powerful combination, allowing you to apply insights from each area to enhance your understanding and enjoyment of the other. Applicants need not have studied these subjects at all or even recently to be accepted on to the course.

In this fascinating course you will examine the structures, institutions, powers, relations and desires that motivate and control human beings and their activities, encouraging you to look

beneath the surface of what we most take granted about life. These Insights can give us new ways of interpreting and understanding human existence.

Study skills classes and tutorials are also available to assist learning.

In year 1 examples of modules on offer at present include 'Introduction to English Literature' and 'Social Science and Society'; in other words, general modules which prepare you for more specialised modules in years 2 and 3. Examples for years 2 and 3 at present include, for English, 'Shakespeare and his Contemporaries' and 'Women's Writing,' and for Sociology, 'Knowledge and Belief' and 'Social Research Methods'.

There are up to 12 hours of classes a week spread across part of 2 to 3 days per week. Depending on module combinations, this may occasionally stretch to part of 4 days.

Course length: 3 years full-time or up to 6 years part-time.

Location: King's Lynn campus

Entry requirements:

- Interview sometimes required
- Two D's at A level or a pass for the Access to Higher Education Diploma with some units at merit or above



Humanities

BA (Hons) History and Sociology LV31 - BA/SH

Course description

The fields of history and sociology form a powerful combination, allowing you to apply insights from each area to enhance your understanding and enjoyment of the other. Applicants need not have studied these subjects recently or even at all to be accepted on to the course.

In this fascinating course you will examine the structures, institutions, powers, relations and desires that motivate and control human beings and their activities, encouraging you to look beneath the surface of what we most take granted about life. These insights can give us new ways of interpreting and understanding human existence.

Examples of year 1 modules at present include 'Introduction to Western Civilisation,' (History) and 'Social Science and Society' (Sociology); in other words, general modules which introduce you to background knowledge, in preparation for more specialized modules in years 2 and 3. Examples of year 2 and 3 modules at

present are 'History Today' and 'the United States in the Twentieth Century' (History) and 'Knowledge and Belief' and 'Social Research Methods' (Sociology).

There are up to 12 hours of classes a week spread across part of 2 to 3 days per week. Depending on module combinations, this may occasionally stretch to part of 4 days.

Course length: 3 years full-time or up to 6 years part-time

Location: King's Lynn campus

Entry requirements:

- Interview sometimes required
- Two D's at A level or a pass for the Access to Higher Education Diploma with some units at merit or above



Sam Bradley, BA (Hons) History and Sociology

Sam applied to CWA to complete a degree as "I found the college to offer an interesting range of degree courses that allowed me to keep my local commitments but also further my education."

Once Sam has completed his degree he plans to complete a Postgraduate Certificate in Education (PGCE) and move into teaching.

"I particularly enjoy the friendly classroom atmosphere and the staff are very approachable and helpful. I would say to anyone thinking about applying to CWA that if you enjoy a friendly and helpful studying environment then the college is a great choice."

“ I particularly enjoy the friendly classroom atmosphere and the staff are very approachable and helpful. ”

Course length: 3 years full-time or up to 6 years part-time

Location: King's Lynn campus

Entry requirements:

- Interview may be required
- At least two relevant A levels at grade D or above
- Or pass or above at Access level, with three units at merit or above
- Mature students with equivalent qualifications or appropriate employment experience may also be considered for an entry onto the programme

Course description

The course is aimed at individuals who are interested in psychology, sociology and criminology, and enjoy working within a variety of academic subjects.

Full-time and part-time students take a variety of both core and choice modules in order to build up a programme of study which suits their own subject interest or future career plans. All students have a personal tutor who they can meet at least twice a semester to review progress and assist with any personal or academic problems. During the first year of the programme study skills classes provide an opportunity to hone skills relevant to higher education.



Joanne Jones, BA (Hons) Psychosocial Studies

“Before joining the college I had few prospects for the future and chose the College of West Anglia because I live locally.”

“Supportive tutors were always available for tutorials, guidance and reassurance when needed. They made me realise I could study, run a busy household and bring up two young children.”

“I was very nervous at first, although the nerves soon subsided once the first few lessons were completed. In the classroom, debates soon became more forthcoming, which aided our learning.”

“I have now started teaching psychology to Access students and am due to begin my Diploma in Teaching in the Lifelong Learning Sector (DTLLS). I also hope to do a masters degree in psychology at some point in the future.”

“Starting my studies at CWA was definitely the beginning of a journey towards my final goal of teaching.”

“ Starting my studies at CWA was definitely the beginning of a journey towards my final goal of teaching.”

Teacher Training & Education

BA (Hons) Post-Compulsory Education & Training (PCET) – Part-time

Course description

This programme has been designed to provide continuing development for professionals who are supporting learning in further, adult and community education and who already hold a Certificate of Education or similar teaching qualification.

The modules which make up the programme have been designed to build on and broaden the experience gained as part of your teaching qualification in order to help you gain a clear insight into a system which has been described as “diverse with complex and varied patterns of provision” (Foster report, 2005: 91).

The programme will go some way to meeting the need for continuing professional development of staff working in the PCET sector which was outlined in the White Paper Further Education: Raising Skills, Improving Life Chances (DfES, March 2005).

The course is delivered through taught modules, one night per week, with students undertaking 60 credits of study per year. There are two semesters each year (September to January and February to May). Each 30 credit module has 300 associated learning hours, made up of a combination of teacher-led (class-based) and self-directed study.

Course length: Part-time

2 years (BA Post-Compulsory Education & Training)

3 years (BA (Hons) Post-Compulsory Education & Training)

Location: King’s Lynn campus

Entry requirements:

- Interview required
- The standard entry requirements for this programme are 120 credits at level 1 and 2. Typically these credits will have been gained as part of a recognised teaching programme such as the Certificate in Education, the City and Guilds 7407 stages 1, 2 and 3, or the Diploma in Teaching in the Lifelong Learning Sector (DTLLS). Qualifications should be no more than five years old
- The programme delivers modules at level 2 and 3 only. Therefore applicants are required to complete a 60 credit (level 1) APEL portfolio before registration
- Applicants will normally be expected to be working in an appropriate role in the PCET sector, and to have had at least two years relevant experience in supporting learning in the PCET sector
- All candidates are expected to provide indications of their ability to: meet the demands of the programme, benefit from the programme and contribute to the programme



Diploma in Teaching in the Lifelong Learning Sector (DTLLS) [Level 5]

Course length: 1 year full-time or 2 years part-time

Location: King's Lynn campus

Entry requirements:

- Interview required
- For the in-service (part-time) route: a minimum level 3 subject-qualification, or substantial experience. Registration with the Institute for Learning (IfL) is mandatory. Level 2 literacy or employer's explicit support to enable an individual to achieve level 2 literacy in the first year of the part-time route
- For the pre-service (full-time) route: a minimum level 3 subject-qualification. Level 2 literacy and numeracy. Successful applicants will be offered places subject to satisfactory CRB-check and placement risk assessment, and will be expected to join the Institute for Learning (IfL) upon accepting a place on the programme. Places on the pre-service route are subject to competitive interview

Teacher Training & Education

Course description

This course is the teaching qualification associated with the 'fullteacher' role. It is offered in two formats: 1) in-service and 2) pre-service.

The in-service route is for practitioners employed within the post-compulsory sector, teaching across a minimum of two levels, with access to at least 150 teaching hours. Practitioners in this role are expected to have responsibility for curriculum development and evaluation; work with larger cohorts and with candidates working across a range of levels.

The pre-service route is for applicants wishing to qualify before applying for teaching posts in the sector. In the pre-service route, the college provides teaching placements which satisfy the requirements of the full-teacher role. The course comprises level 4 and level 5 mandatory and optional units, but will be awarded at level 5 on completion. It has a total value of 120 credits.



Maggie Cousins, BA (Hons) Post-Compulsory Education & Training (PCET)

Maggie applied to the college to complete a degree level course as "it was progression from previous courses completed over many years. CWA is also conveniently located, making studying affordable."

The thing Maggie most enjoys about coming to college is "learning, thinking and sharing knowledge with like-minded people, in a safe, encouraging, honest and friendly environment."

Once Maggie has finished this course she plans to continue teaching and learning. She says "I am a journey, not a goal person. I enjoy the 'getting and sharing' of knowledge and skills and seeing that when we make a positive difference in our own life it makes a positive difference in the lives of others."

Maggie would say to anyone thinking about studying a degree level course at CWA "Talk to people at the college, especially HE staff and careers advisors so that you can make an informed choice. HE is always a big commitment so be sure to make this commitment with open eyes. A degree is not meant to be a walk in the park – but it can be life changing and exciting."

“ Attend every lecture, utilise every facility and support network and aim to have some fun on the way. And most of all it's never too late – I am 57! ”

Access/Pre-degree

Access to Higher Education

Course description

The College of West Anglia is a longstanding and successful provider of Access courses. These provide sound preparation for higher education and are an excellent way to take the first steps towards a degree or higher national diploma. Our Access courses are validated by the Cambridge Access Validating Agency (CAVA)



Gemma Barbieri, Access to Humanities – English, Sociology and History

“I applied to CWA to study for a degree as it’s conveniently located for me. I have two children attending school in King’s Lynn and the idea of commuting wasn’t very attractive. I have found the standard of teaching to be very high, I love the intimacy of such a small campus and, as it

is an Anglia Ruskin degree I don’t think future employers will question the standard” said Gemma.

The thing Gemma most enjoys about coming to college is “the small, friendly atmosphere and close relationships I have formed with the staff, which will be strengthened over the next few years. The mature student lounge is a lovely atmosphere to hang out in with a friendly environment and a feeling of camaraderie.”

Once Gemma has completed her degree she is contemplating teaching in further education or moving into journalism. “I know that over the next 3 years I’ll be able to think more in depth and get lots of support from my peers at college and the staff while reaching a decision” said Gemma.

Gemma would say to anyone thinking about studying a degree at CWA “definitely enrol, come and meet everyone and really think about the kind of learning environment you want to learn in. A big university campus with the whole ‘student lifestyle’ may have been appealing at 18 but if, like me, you are a more mature student a small, intimate atmosphere with friendly, knowledgeable and approachable staff may make the difference between whether or not you stick out the full 3 years.”

and lead to a nationally recognised qualification for entry to university level study. The purpose of the Access programme is to help students regain confidence and study skills that may have been lost through previous bad experiences, or through time. Study time at home should match the time you spend in the classroom.

Course length: 1 year, full-time

Location: King’s Lynn campus; Isle campus

Entry requirements:

- There are no formal entry requirements. Applicants would normally be expected to have a grade C (or above) in English language (and maths, for science and nursing pathway) at GCSE or O level. However, all applicants will be interviewed and if you do not have this level of qualification, you may be asked to demonstrate your ability by producing, for example, a piece of writing. You must be aged 19 or over to join this course.

There are a number of different pathways available within the combined Access programme as follows:

Humanities and social sciences (King’s Lynn & Isle campuses) – modules offered may include English literature, history, psychology, sociology and law.

Science and nursing (King’s Lynn campus only) – modules can be chosen from: human biology; forensic science; health and community studies; physics; chemistry; psychology; geography and level 3 mathematics. (for professions allied to medicine, but not medicine or dentistry, for which we run a separate Access course).

Medicine and dentistry (King’s Lynn campus only) – for full details of this course please visit www.cwa.ac.uk

Course length: 1 year, full-time

Location: King's Lynn campus; Isle campus

Entry requirements:

- Interview required
- Students are usually 18 years of age and should normally have at least one GCE A Level supported by three GCSE grades A* to C
- Equivalent qualifications may be accepted, i.e. Access, National Diploma etc
- You will be invited to attend an interview at which you will be expected to show a portfolio of work which demonstrates evidence of ability and commitment, while suggesting you will benefit from doing the course

Course description

Foundation Diploma in Art and Design is a high profile, nationally recognised qualification. Its primary aim is to educate students to make informed decisions which will facilitate their progression (primarily, but not exclusively) to appropriate higher education in art and design. The course aims to build on the students' prior experience while introducing them to a much broader range of art and design possibilities than they may have previously experienced. Challenges are made and ideas are introduced which are intended to extend the students critical knowledge, understanding and independence in readiness to exploit relevant progression opportunities in higher education and career choices.

The programme is characterised by experiential, experimental and integrated learning, relying upon the development of manual skills, whilst valuing the accidental and disruptive results that can occur. The programme of study utilises a full range of teaching expertise and learning opportunities are provided which are necessary for increasing student awareness of the demands of art and design, and the recognition of the common principles and distinctive characteristics of subject disciplines.

Access/Pre-degree

Preparing to Teach in the Lifelong Learning Sector (PTLLS)

Course description

This is an introductory qualification which all new teachers in the learning and skills sector must complete. The PTLLS qualification is embedded in two other teaching qualifications: CTLLS and DTLLS. This course is a PTLLS-only qualification.

The Award comprises one unit, entitled 'Preparing to teach in the Lifelong Learning Sector'. This qualification is on the Qualification Credit Framework (QCF).

The assessment is based on the teaching / training cycle and is assessed by two assignments, one theory and one practical, both of which are broken down into smaller, prescriptive assignment tasks.

Course length: 48 hours studies over 9 weeks

Location: King's Lynn campus

Entry requirements:

- Interview is required
- Level 3 subject qualification, or substantial experience
- You should consider joining the Institute for Learning (IFL)



Course length: 1 year, full-time

Location: King's Lynn campus; Isle campus

Entry requirements:

- Interview required
- Level 3 subject qualification or substantial experience
- Candidates are expected to have a work-based (subject specialist) mentor
- Confirmation of at least 30 hours of teaching practice
- Membership of the Institute for Learning (IFL)
For more information visit www.ifl.ac.uk



Michelle Deyna-Hayward
Certificate in Teaching in the Lifelong Learning Sector (CTTLS)

After successfully completing the CTTLS course Michelle is now employed by the College of West Anglia as a learning support officer (LSO) and hopes to continue her studies at the King's Lynn campus.

“For a long time I have had a dream to teach but went straight into work as a school leaver (for financial security). I had a very successful career in London but I was trapped, I was time poor and unable to give up work completely. I had to let my university place go and thought I would never realise my ambition at all. I attended my interview for the CTLLS course, with some trepidation as I had written no more than a shopping list for some time and thought ‘assignments’ were undertaken by spies” said Michelle. Michelle would say to anyone thinking about applying to CWA to complete an HE level course “don’t even think about it. Go for it! You not only gain qualifications and expertise in your chosen field, but experiences, friendships and contacts that can be taken with you throughout your career.”

Course description

This qualification will be taken by practitioners in the Associate Teacher Role. You are deemed to be in an Associate Teacher Role if your responsibilities are to teach predominantly in at least one of the following ways:

- from packs/ pre-prepared materials, therefore having fewer responsibilities in design of curriculum and materials generally
- on a one-to-one basis
- a programme confined to a particular level/ subject/ type of learner (i.e. does not develop or deliver a full range across a curriculum area)
- short courses

The qualification is available from City & Guilds at level 3 and level 4. It comprises of two and one optional unit. This qualification is on the Qualification Credit Framework (QCF)

The Certificate requires at least 30 hours of teaching practice. Observation of practice is completed through a class-based micro-teach and a minimum of three hours of observed practice.

Elements of the Minimum Core of Literacy, Language and Numeracy will be embedded in this qualification.

The course usually runs one evening per week.

The College
of West Anglia



King's Lynn Campus:

Cambridge Campus (Milton):

Isle Campus:

Web: www.cwa.ac.uk

Tennyson Avenue, King's Lynn, Norfolk PE30 2QW. Tel: 01553 761144

Landbeach Road, Milton, Cambridgeshire CB24 6DB. Tel: 01223 860701

Ramnoth Road, Wisbech, Cambridgeshire PE13 2JE. Tel: 01945 582561

Email: admissions@col-westanglia.ac.uk



Scan barcode to visit our website

